



CHILDREN'S

GRIEF CENTRE



Annual Report 2021

“Making a difference in the lives of children
and young people affected by loss”



CHILDREN'S

GRIEF CENTRE

About the Children's Grief Centre

Since 2009, The Children's Grief Centre has provided a support service to children and young people affected by loss through bereavement, separation, or divorce. Each year approximately 230 children and young people attend the Centre for one-to-one sessions with our support workers. Our services are free, but we are a registered charity and always welcome donations. The Centre addresses the need for support for children and young people who are grieving. The service we offer at the Children's Grief Centre is a listening service that helps children and young people better understand and normalise their feelings. Children adapt to loss to a great extent on how those around them support them in the grieving process. Without the support provided by the Children's Grief Centre, many children would experience long term mental health problems.

Mission

The mission of the Children's Grief Centre is to provide support for school aged children and young people affected by loss through death, separation, or divorce. We offer a safe and supportive place for children, young people and their families who are grieving. The service is provided by trained and experienced people.

Aims

Children are given the opportunity to look at feelings associated with loss and learn that they are not alone. We aim to help children overcome obstacles that prevent them from leading full lives. In addition, the Children's Grief Centre strives to educate the community that grieving is an important part of life and is essential to an individual's ongoing growth and development.



Values



Caring

Through listening - we give children a space to talk, share, ask questions and explore their emotions.

Safety

We offer a safe place that helps children feel calm secure and welcomed.

Non-judgmental

Our role is never to judge, sway opinion or arbitrate between parents. We are here to support the children.

Acceptance

We work with children across all backgrounds, cultures, and religions.

Teamwork

We have a team of professionals with a combination of skills and qualifications.

Table of Contents

About the Children's Grief Centre	1
Company Information	3
Chairperson's Foreword	4
Introduction by the CEO (Volunteer)	5
The Children we helped in 2021	6
Feedback from Parents and Children	7
Supporting Adolescents	8
Fundraising Report	9
Sponsors and Donors	10
Farewell	12
Bereaved Childhood Awareness Week	12
Ministerial Visit	13
The Dream Build	14
Governance	16
Our Team	17
Looking towards the future - Toolkit	18
Our Dream Build	19
Financial Report	20

Company Information

Directors

Chairperson
Secretary

Philip Mortell	
Derek Walsh	
Anne Marie Ryan	
Caroline Keane	
Elke Hayes	
Kevin Shine	Appointed 11/05/2021
Majella Murphy	Appointed 05/10/2021
Paul Dennehy	Appointed 05/10/2021
Dr Paula Gaire	
Anne Comerford	
Sr Therese Barry	
Seamus O'Brien	Resigned 09/03/2021
Fr Michael Kelleher	Resigned 08/06/2021
Marie Stuart	Resigned 20/01/2021

Company Registered Number	664602
CHY	22832
Registered Charity Number	20205877
Registered office	Dublin, Ireland
Chief Executive Officer Auditor	Helen Culhane Carey & Associates New Garden Lisnagry Co. Limerick
Banker	Bank of Ireland 125 O'Connell St Limerick
Solicitors	Elizabeth Walsh Solicitor's 1 Catherine St. Limerick

I am delighted to present the Annual Report and Financial Statements of the Children's Grief Centre CLG for the year 2021, our first year as a Company Limited by Guarantee.

CLG status entails new challenges and responsibilities, and as Chair I want to record the gratitude of the Company to all the members of the Board, both past and currently serving, for their unstinted efforts on behalf of the Company as we strive to meet these challenges and embrace these responsibilities.

During 2021 we said goodbye to three stalwart members of the Board: Seamus O'Brien, Fr Michael Kelleher CSsR and Sr Marie Stuart RSM. And we were joined by three new and brave volunteers: Kevin Shine, Majella Murphy and Paul Dennehy.

Much work remains to be done as the Board engages with the statutory, regulatory and contractual requirements of the Companies Registration Office (CRO) and the Charities Governance Code. Caroline Keane chairs the Risk/Governance sub-committee which takes the lead in this all-important work. Other sub-committees include Building, Fund-raising, Finance, and HR.

The other major focus of the Board is, of course, the rehabilitation and re-construction of the new Grief Centre from the bones of the 19th century Widows' Asylum / Ladies Residence on the John Henry Newman Campus of Mary Immaculate College. Advised and directed by our vastly experienced volunteer Project Manager, Jonathan Harper, we hired first the architects (Drake/Hourigan) and then the builders (NAUTIC). Work began on site in November 2021 and is scheduled for completion by January 2023.

It remains for me to thank the following, in addition to those already mentioned, and without whom the work of the Grief Centre could not continue:

- Our CEO, Sr Helen Culhane, and the dedicated staff and volunteers who make possible the work with grieving children which is the raison d'être of the Centre's existence.
- Our funders, statutory and voluntary, and the business and private donors who continue to fund-raise for us, year in and year out.
- Our wonderful and inspiring Ambassador, Olive Foley.

Phil Mortell

Chair

13 July 2022

Chairperson's Foreword



It is with great pleasure that I present the 2021 Children's Grief Centre CLG, (referred to hereafter as the Centre) Annual Report. For 13 years the Centre has been supporting grieving children and their families through free one to one sessions. 2021 continued to be exceedingly busy, with ever expanding referrals. Despite the many challenges of Covid we managed to continue to provide ongoing support for families affected by loss through death, parental separation, or divorce. We supported 232 children for a total of 766 one to one sessions. Parents attended 166 face to face sessions and 14 zoom sessions. In response to COVID-19, in January 2021, we transitioned our individual one to one session to being available online. Our Support Workers were also available to provide additional phone and email support to families during this time. Our volunteer Support Workers did not return until September due to the pandemic. We resumed face to face appointments from the 19th April 2021.

Construction on the new dream build is underway since November 2021 and is scheduled to open in February 2023. The new Centre will provide a safe, welcoming place for children and their families to receive grief support services. Our aim is to bring the spirit of our present location to the new Centre. Next year will be our 14th anniversary as an organization, and it seems appropriate that we are moving into our new facility and think about the next 20, 30 and 40 years ahead. Our new build will allow us to improve access to services and ensure the sustainable impact of the organization for years to come. It will feature ten parking spaces, a small garden, customized art, play and five support rooms, as well as staff offices. The Centre receives a small amount of funding from Government and relies on the community in ensuring supports are available to grieving children and young people who need it. I am struck by the incredible generosity and passion of the many clients of our service, who have fund raised and advocated for the Centre, to ensure that others grieving are supported. As a team we have grown, Fiona Sullivan was appointed Finance Officer in September 2021 and was replaced in Administration by Mary Commins. We said goodbye to Katrina Morgan (fundraising) and Carol Fitz-Gough assumed the position of Fundraising & Events Coordinator. Carol is assisted in the day to day running of the fundraising department by Orla Ryan.

I want to acknowledge and say thanks to our Support Workers, Theresa Kavanagh, Maria Anketell, and Ciara Ni Nuallain. Our volunteer Support Workers, Mary Browne, and Geraldine Carey returned in September and are wonderful people of extraordinary compassion. In the background Helen McNerney and Mary Commins our Administrators are doing amazing work running the office. I would like to extend my gratitude to the Mercy Congregation (South Central Province) for their ongoing generosity and invaluable financial support to the Centre during 2021. Finally, I would like to extend my appreciation and gratitude to all our Board Members who on a voluntary basis, give so willingly and freely of their time and commitment on an ongoing basis. I would like to acknowledge the invaluable contribution and significant level of support received throughout 2021 from Mr. Philip Mortell, the Board of Directors Chairperson. The Centre is committed to upholding the highest standard of corporate governance. Board members are appointed on the basis of skills, knowledge, and experience. I wish to acknowledge the ongoing support we receive from our Ambassador, Olive Foley.

A huge thank you to everyone who has made our work possible in 2021. A particular thanks to Mary Commins for her work on this annual report.

Helen Culhane

Introduction by the CEO (Volunteer)



The Children we helped in 2021

232

children
attended the
service

134

female

98

male

766

one to one
sessions



20

children had
zoom sessions

166

parents
attended for
face to face
sessions

14

parents had
zoom sessions

151

new referrals

Geographical Spread

Children travel from the following counties:

Limerick, Tipperary, Clare, Offaly, Galway, Kerry and Cork

Feedback from Parents and Children

Child Feedback

Age 14

I liked the most that I got to talk about what is happening in my life.

Age 15

It is calming and quiet and it was a safe environment to think and to speak.

Age 16

I liked talking to someone about how I am feeling about certain subjects that I can't talk to my friends or family about.

Age 6

I enjoyed playing. The support worker helped me feel different.

Age 7

I liked coming here because it is funny, it is helpful and there are kind generous workers here.

Age 9

You helped me by showing me that all feelings are okay to feel. Now I understand and it made my life better.

Parent Feedback

He talks more & more about his Daddy and recalls happy memories. His anger has abated and is a happy child.

She is now more confident, not as anxious and worried as before. Her teachers see a huge difference.

She talks about her Dad everyday now in a more positive way, less sad and tearful.

Myself and my daughter sit down and talk things through now in a more relaxed manner.

He seems more vocal about things that are bothering him and he is more confident in himself.

He is more open about talking about his dad. He has a better understanding of his feelings.

Supporting Adolescents



With the easing of covid restrictions, we were thrilled to welcome our children, young people, and their families back to the Centre as we resumed in person sessions. We continued to deliver support to adolescents via Zoom although the feedback we received was that they preferred to meet with their support worker at the Centre. Over the past year, we have noticed unique challenges for the adolescent who experiences displacement, rejection or death of a parent or adult care giver. No matter what age, the child is impacted by this rupture, (Bowlby, 1988). Coping with the devastating loss of a parent or a loved one is hard enough for a child but add in the pandemic which altered our daily routines, and ability to connect with others, and things can feel extremely overwhelming. This has caused many children and young people to suppress their grief.

From our experience, deferring their grief in this way can lead to several difficulties for children and young people, such as problems at school, mental health issues and more risk-taking behaviours. With pandemic related deaths, (CSO, 2021) and separations on the increase, (Irish Times, July 2021) it is time now more than ever to be grief informed.

We have seen an increase in the number of young people wishing to return to the Centre for support. Grief changes over the course of a child's development and adolescent development may occur in a life space that is complex and difficult. Supporting the adolescent to find language for and make meaning of their experience is imperative so that they can go on to lead full and flourishing lives. Due to this increase, we are hoping to extend the age range from eighteen years to twenty-four years when we relocate to our new building.

Over the past year, we received several calls from teachers requesting support for bereaved children and young people. Although schools recognise bereavement as a high priority, teachers say they feel ill-equipped to offer support to bereaved children. Our grief support pack for primary schools is near completion and we are delighted to launch it this Autumn.

We have been completely bowled over by the level of commitment and support that we have received from so many individuals and organisations. Donations are always gratefully received, but the support during a global pandemic, when people's income is dropping and their employment is uncertain, is something that we have been incredibly humbled by. Our new build is progressing well, and we are so grateful to everyone involved working to make our dream build become a reality.

Theresa Kavanagh

Senior Support Worker

...it is time now more than ever
to be grief informed.

Fundraising

As we entered another year of uncertainty with the pandemic still present, we were overwhelmed by the support and generosity of people young and old in the local and wider community who took the time to think of us and fund raise for our services and our new building. We give thanks to Tusla and the HSE for part funding towards our full-time support worker. Additional funding is also provided by the Limerick City and County Council to fund our part time support worker (2 days). We would also like to acknowledge the support of the Lorna Byrne Children's Foundation for an additional grant towards a part-time support worker.



Many fundraising events took place during 2021 such as May 5K, the Lego Walk Challenge, Run for Liam – Cook Mini Marathon, Dell employees virtual walk of Ireland, Gary O'Donoghue who completed his first ever marathon, Marketing Mentors, Cahill Family Tractor Run, Sharjah Gaels, Limerick Bar Association Coffee Morning and Chadwick's Mountain Climb all contributed towards the services provided here in the Centre.

Our good friend Sr. Mary Aherne is an avid fundraiser and raises vital funds for us. We have received generous support towards our Dream Build fundraising campaign which was launched in March 2021.

Donations were also received from the following corporate partners: Analog Devices, Dell, Bons Secours, Brown Thomas Limerick and Phoenix Tower International.



Sharjah Gaels GAA - Dubai

The club organised a hurling tournament in memory of the late Paul Carey. Proceeds from the event were donated to the Children's Grief Centre.

Sponsors & Donors

We would like to express our gratitude to our corporate and individual sponsors and the many philanthropic organisations that support our work.

Schools:

Clonlara National School, Co. Clare
JFK Primary School, Limerick
Lisvernane National School, Galbally, Co. Limerick
Newport Community Playschool & Convent Primary School, Tipperary
St Joseph's Secondary School, Tipperary Town
St Nesson's Primary School, Mungret, Co. Limerick
The Model School, Limerick

Sporting Groups & Community Organisations:

Analog, Limerick
Anthony Foley Golf Memorial at Adare Manor
Brown Thomas, Limerick
Cahill Family Tractor Run
Cook Mini Marathon
Dell, Limerick
Gary O'Donoghue Marathon
Great Limerick Run
Lego Walk Challenge
May 5k Challenge CGC
Run for Liam in memory of Liam's 7th Birthday
Sharjah Gaels in memory of Paul Carey

Corporate:

Bar Association, Limerick
Bons Secours, Cork
Chadwicks Staff - Moylussa Climb
Growth By Giving – Marketing Mentors
Phoenix Tower International, USA
Shannon Group, Co. Clare

Brown Thomas

Anthony Foley
Golf Memorial
at Adare Manor
Golf Club

Cahill Family
Tractor Run



Gary O'Donoghue
Marathon



Bons
Secours



Bar Association



Chadwicks



Growth By Giving –
Marketing Mentors



Dell Employees Virtual
Walk Around Ireland





Farewell

Katrina played an important role in organising many successful fundraising events and working closely with our corporate partner's. Katrina cared passionately for the children and families that came to the centre for support. We wish Katrina and her family all the very best for the future.



Bereaved Childhood Awareness Week

In 2021 the theme for Bereaved Childhood Awareness Week was "Holding the Hope for Bereaved Children". We asked schools to set up a memory tree so children would get involved and raise awareness of childhood bereavement. In the centre, we created a butterfly collage and invited children, parents, and guardians to enter the name of a loved one on the butterfly to recognise the strength and healing of the children.

John F Kennedy School – Memory Tree

Ministerial Visit - Ann Rabbitte TD

22nd October 2021

We were delighted to welcome Anne Rabbitte, Minister of State Department, Disability, Equality, and Integration along with Minister Patrick O'Donovan and Senator Maria Byrne for an official visit to the Children's Grief Centre. Minister Rabbitte listened intently as we explained our work and our plans for the new Centre.

We featured on Nationwide on the 11th October 2021. The segment showed the impact of our work on children and young people.



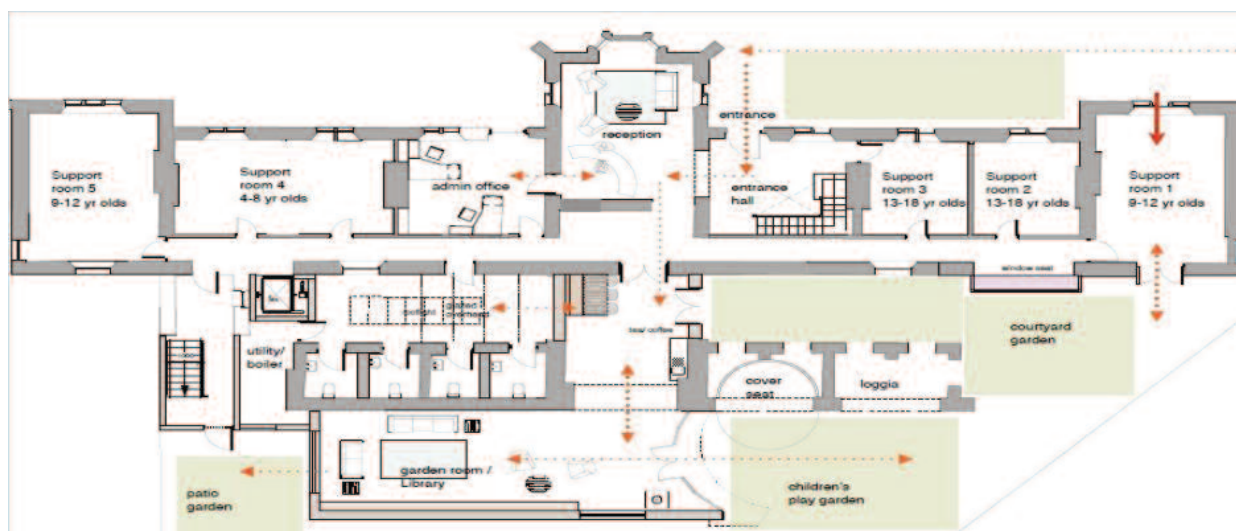
youtu.be/xea39naBGrE

The Dream Build

In 2020 the Ladies Residence, on the John Henry Newman Campus at Mary Immaculate College was kindly donated to the Children's Grief Centre by the Sisters of Mercy. It is serendipitous that the Ladies Residence, that provided shelter to grieving ladies, now has a future providing support to grieving children. Our plans to convert this historic two-story building into a warm and welcoming place for children and their families is well underway. The refurbishment of our dream build will cost approximately €3.5 million. We are delighted to collaborate with Ailish Drake and Conor Hourigan of Drake|Hourigan architects. Their expertise, design concepts and understanding of our needs is essential in delivering the absolute best for grieving children, young people, and their families. We are extremely grateful to project manager, Jonathan Harper for his exemplary management of our dream build. A lot has changed in the past 10 years, but some things remain the same, primarily our commitment to ensure that no child grieves alone. Our new building will provide a warm and welcoming environment where children and families will find healing and hope.

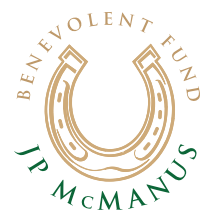
The new Centre will accommodate the following rooms:

- One room for 4–9-year-old
- Two rooms for 6–12-year-olds
- Two rooms for 13–18-year-olds.
- Three adult counselling rooms
- Volunteer Room/Library
- Conference room
- Kitchen
- Staff Offices
- Waiting room
- Sensory/memory garden





We convey our sincere thanks to the JP McManus Benevolent Fund for the outstanding generosity to the Dream Build. Their very generous donation to the Centre helped us to start work on the new Centre in October 2021. We are incredibly grateful for the continued support of the McManus family over the past number of years and the difference this support has made to our work with children, young people, and their families.



Governance

The Children's Grief Centre CLG is a non-profit organization that has supported children and adolescents in the greater Mid-West area and further afield who have been affected by loss through bereavement, separation, or divorce, since 2009. The Centre provides a free support service to children and young people.

Children's Grief centre is a company limited by guarantee. A Board of Directors manages the organisation, with operational responsibility delegated to the CEO (Chief Executive Officer) of the organisation, who is not a member of the board. Our Board of Directors is responsible for the overall governance and strategic direction of the organisation.

All directors are voluntary, they receive no remuneration expenses, allowances, or payment of any kind. This includes the founder Sr. Helen Culhane who receives no salary, expenses, or allowances, nor ever has, for her continued and valuable contribution to the running of the Centre.

During 2021 Children's Grief Centre's Board of Directors held eight board meetings. The following table shows meeting attendance and years of service.

Children's Grief Centre Board of Directors 2021

Board Member	Meeting Attendance	Years of Service	Joined / Resigned
Phil Mortell (Chairman)	8/8	1	
Dr Paula Gaire	4/8	1	
Sr Therese Barry	8/8	1	
Kevin Shine	2/8	7 months	Joined May 11th
Majella Murphy	3/8	2 months	Joined October 5th
Caroline Keane	8/8	1	
Elke Hayes	8/8	1	
Anne Comerford	8/8	1	
Ann Marie Ryan	7/8	1	
Derek Walsh (Secretary)	8/8	1	
Paul Dennehy	2/8	2 months	October 2021
Seamus O'Brien	2/8	2 Months	Resigned 9th March
Fr. Michael Kelleher	4/8	5 Months	Resigned 8th June

Our board is composed of volunteers who give freely of their time and expertise to help Children's Grief Centre to set out and achieve our mission. We would like to thank all members of the Board of Directors who progressed the interests of the Children's Grief Centre during 2021.

Our Team

Staff

Theresa Kavanagh	Senior Support Worker	Full-Time
Ciara Ni Nuallain	Support Worker	Part-Time
Mary Commins	Administrator	Part-Time
Helen McInerney	Administrator	Part-Time
Fiona Sullivan	Finance Officer	Part Time
Carol Fitz-Gough	Fundraising and Events Co-ordinator	Part-Time
Orla Ryan	Fundraising Assistant	Part-Time

Volunteers

Helen Culhane	CEO
Olive Foley	Ambassador
Beryl Carswell	Support worker
Mary Moran	Administrator
Mary Fagan	Administrator
Ita Hannan	Support Worker
Mary Browne	Support Worker
Geraldine Carey	Support Worker

Fundraising Committee

Michelle Walsh
Breda Cleary
Kevin Shine
Maire Casey

Décor and Maintenance

Dolores Madden and Ann Gilbourne

New Build Committee

Jonathan Harper
Catherine Kelly
Theresa Kavanagh
Helen Culhane

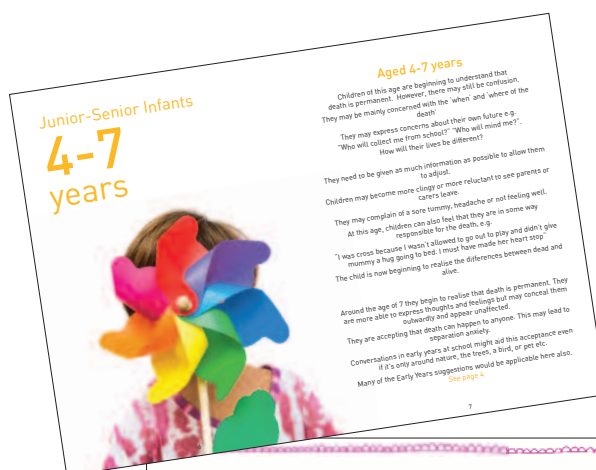
We would like to acknowledge the contribution of Mary Power (Support Worker) who for personal reasons is no longer volunteering with us.

Looking towards the Future

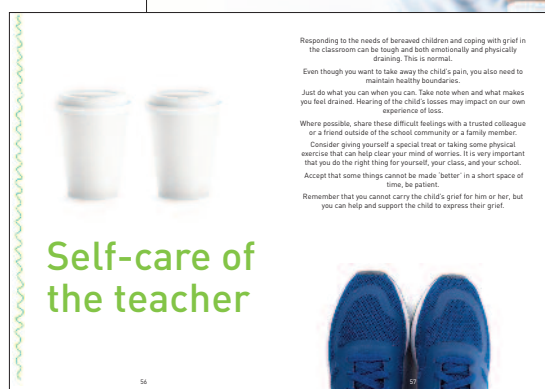
Toolkit

Since 2009, the Children's Grief Centre has been a light in the darkest of times. Death is one of the most traumatic experiences a child can live through. Children experience the grief and anxiety that comes from loss in different ways at different stages in their developmental growth. Bereavement impacts on a child's emotional, physical, and psychological well-being.

We are in the process of designing a toolkit for primary school teachers to support children and young people affected by loss through death. Teachers are often at a loss as to what to say or do to help a child or young person who has been bereaved by the death of someone important to them. Our aim is that teachers can use the Toolkit to support their pupils and colleagues when a person dies. The toolkit is made possible by a generous contribution from the Lorna Byrne Foundation. Our plan is to launch the toolkit in 2022.



When a child in your school experiences bereavement



Our Dream Build

After the “dream build” fundraising campaign last year, building on the new Children’s Grief Centre began in November 2021. The new building at the John Henry Newman Campus at Mary Immaculate College will allow us to deal with the rising demand for our services. We are looking forward to the future with excitement and will be able to provide a bigger and greater service to the children of Limerick, the Midwest and beyond.



Carol Fitz-Gough, Philip Mortell, Mary Moran, Helen Culhane, Olive Foley, Ciara McCullough, Therese Barry, Jonathan Harper and John O’Gorman

Cathal Gleeson of Nautic Building Company said, “The build involves the restoration of the existing structure, and the architectural concept is to keep it in line with the original design. We are modernising the mechanical and electrical and we will have it finished by September 2022. The build involves restoration of the existing structure of the building located on the grounds of the original Children’s Grief Centre. The build aims to align with the original design of the building while introducing a modern, child-centered design. The rooms will be welcoming and warm, and there will also be a conference room. There is a plan to run educational services for the wider community. The new centre will include a waiting room equipped with tea and coffee making facilities, five children’s support rooms, a library, three adult support rooms and six staff offices.



Financial Report

The Board of Directors present their Annual Report and the Audited Financial statements for
The Financial Year Ended 31st December 2021.

The Financial statements are prepared in accordance with FRS 102 "The financial and Reporting Standard applicable in the UK and Republic of Ireland" and Accounting and Reporting by Charities: Statement of Recommended Practice applicable to charities preparing their financial statements in accordance with the Financial Reporting Standard applicable in the UK and Republic of Ireland (FRS 102).

The Trustees report contains the information required to be provided in the Trustees' Annual report under the Statement of Recommended Practice (SORP) guidelines.

Financial Results

The surplus for the financial year amounted to €213,584. This represents an increase of 96.8% on the prior year (€108,505) when many fundraising events were cancelled due to the Covid-19 restrictions. Total Income for the year was €391,378 which was an increase of 49.9% on the prior year (€260,940). Expenditure of €177,794 was up 16.6% in comparison to the prior year (€152,435)

Total Income

2020	2021
€260,940	€391,378

Increase of 49.9%

Funding

We continue to rely on a variety of income streams & in-kind donations to meet the costs of delivering our free support service. In 2021 we continued to generate sufficient cash flow to meet our operating costs and increased our building fund by €148,513. This fund is specifically for the purpose of adapting and transforming the former Ladies Residence, on the John Henry Newman Campus, to create our new purpose built Children's Grief Centre.

The Mercy Congregation continue to support our service through their in-kind donations of both our premises and utilities.

Our CEO provides her professional services free of charge to the centre. The centre's full time support worker is jointly funded by Tusla, Child and Family Agency and the Health Service Executive. Additional funding is also provided by the Limerick City & County Council to fund our part-time support worker position under the Social Intervention Fund.

Our amazingly generous volunteer support workers continue to give of their time and expertise greatly reducing the centre's running costs by allowing us to keep staff levels low.

We employ the full time equivalent of 4.33 staff. This includes the support workers mentioned above as well as 2 part time administrators, 2 part time fundraisers and a part time finance officer. Income received from fundraising events as well as individual and corporate donations are used in part to fund these positions, which are vital for the successful delivery of our service.

Restricted funding is used only for the purpose for which it was granted.

Statement of Financial Activities

Children's Grief Centre STATEMENT OF FINANCIAL ACTIVITIES

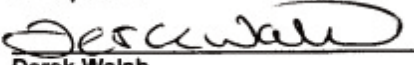
for the financial year ended 31 December 2021

	Notes	Unrestricted Funds 2021 €	Restricted Funds 2021 €	Total 2021 €	Unrestricted Funds 2020 €	Restricted Funds 2020 €	Total 2020 €
Income							
Donations and legacies	3.1	168,343	148,513	316,856	112,098	106,185	218,283
Other income	3.2	-	74,522	74,522	-	43,657	42,657
Total income		168,343	223,035	391,378	112,098	148,842	260,940
Expenditure							
Charitable activities	4.1	103,272	74,522	177,794	109,078	43,657	152,435
Net income/(expenditure)		65,071	148,513	213,584	3,020	105,485	108,505
Transfers between funds		-	-	-	-	-	-
Net movement in funds for the financial year		65,071	148,513	213,584	3,020	105,485	108,505
Reconciliation of funds							
Balances brought forward at 1 January 2021	12	86,859	406,794	493,653	83,839	301,309	385,148
Balances carried forward at 31 December 2021		151,930	555,307	707,237	86,859	406,794	493,653

The Statement of Financial Activities includes all gains and losses recognised in the financial year.
All income and expenditure relate to continuing activities.

Approved by the Board of Trustees on 18 July 2022 and signed on its behalf by:


Philip Mortell
Chairperson


Derek Walsh
Trustee

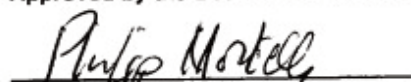
Balance Sheet

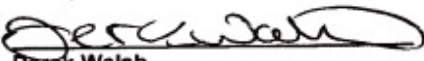
Children's Grief Centre BALANCE SHEET

as at 31 December 2021

	Notes	2021 €	2020 €
Fixed Assets			
Tangible assets	7	<u>189,695</u>	<u>22,930</u>
Current Assets			
Cash at bank and in hand		<u>552,024</u>	<u>534,607</u>
Creditors: Amounts falling due within one year	8	<u>(34,482)</u>	<u>(63,884)</u>
Net Current Assets		<u>517,542</u>	<u>470,723</u>
Total Assets less Current Liabilities		<u><u>707,237</u></u>	<u><u>493,653</u></u>
Funds			
Restricted trust funds		<u>555,307</u>	<u>406,794</u>
General fund (unrestricted)		<u>151,930</u>	<u>86,859</u>
Total funds	12	<u><u>707,237</u></u>	<u><u>493,653</u></u>

Approved by the Board of Trustees on 18 July 2022 and signed on its behalf by:


Philip Mortell
Chairperson


Derek Walsh
Trustee

Supplementary Information relating to Financial Statements

Children's Grief Centre STATEMENT OF FINANCIAL ACTIVITIES

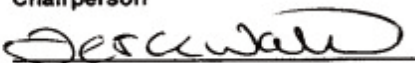
for the financial year ended 31 December 2021

	Notes	Unrestricted Funds 2021 €	Restricted Funds 2021 €	Total 2021 €	Unrestricted Funds 2020 €	Restricted Funds 2020 €	Total 2020 €
Income							
Donations and legacies	3.1	168,343	148,513	316,856	112,098	106,185	218,283
Other income	3.2	-	74,522	74,522	-	43,657	42,657
Total income		168,343	223,035	391,378	112,098	148,842	260,940
Expenditure							
Charitable activities	4.1	103,272	74,522	177,794	109,078	43,657	152,435
Net income/(expenditure)		65,071	148,513	213,584	3,020	105,485	108,505
Transfers between funds		-	-	-	-	-	-
Net movement in funds for the financial year		65,071	148,513	213,584	3,020	105,485	108,505
Reconciliation of funds							
Balances brought forward at 1 January 2021	12	86,859	406,794	493,653	83,839	301,309	385,148
Balances carried forward at 31 December 2021		151,930	555,307	707,237	86,859	406,794	493,653

The Statement of Financial Activities includes all gains and losses recognised in the financial year.
All income and expenditure relate to continuing activities.

Approved by the Board of Trustees on 18 July 2022 and signed on its behalf by:


Philip Mortell
Chairperson


Derek Walsh
Trustee

When you are sorrowful, look again in
your heart, and you shall see that in
truth you are weeping for that which
has been your delight.

Kahlil Gibran





CHILDRENS

GRIEF CENTRE

DONATIONS

Our services are free. We are a registered charity and welcome donations.

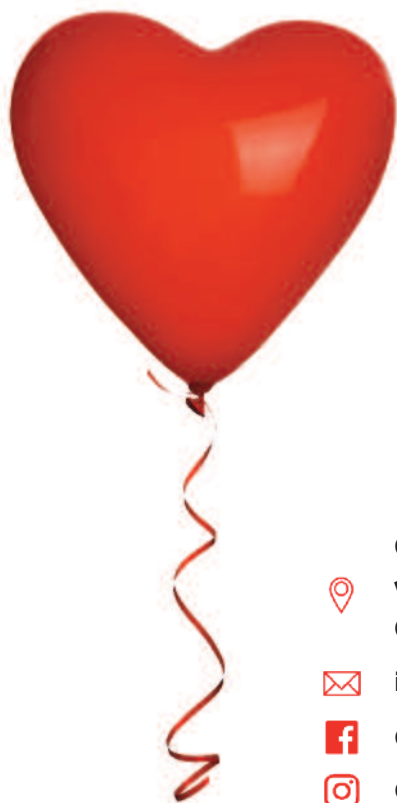
APPOINTMENTS

Please contact the office during
the following times to make an appointment:

Monday – Friday:

9.30am – 1.00pm

1.30pm – 5.00pm



Children's Grief Centre CLG



**Westbourne, Ashbourne Avenue, South
Circular Road, Limerick, V94 A5NA**



info@childrensgriefcentre.ie



@childrensgriefcentre



@childrensgriefcentre



087 9851733

CHY 22832

RCN 20205877

CRO 664602

www.childrensgriefcentre.ie